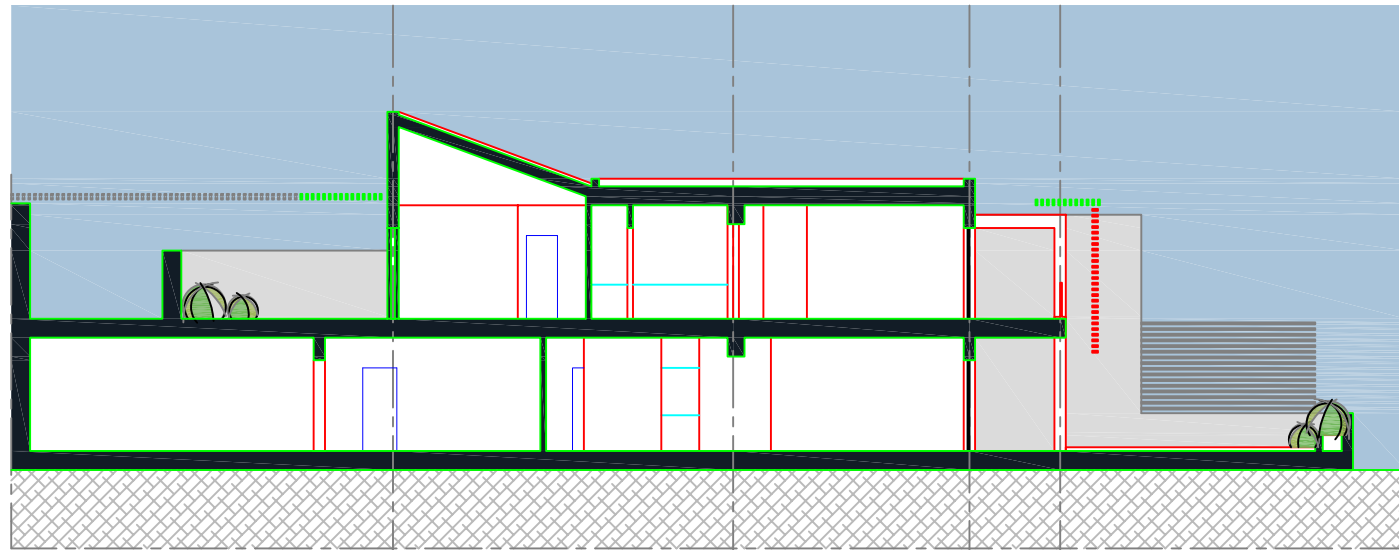
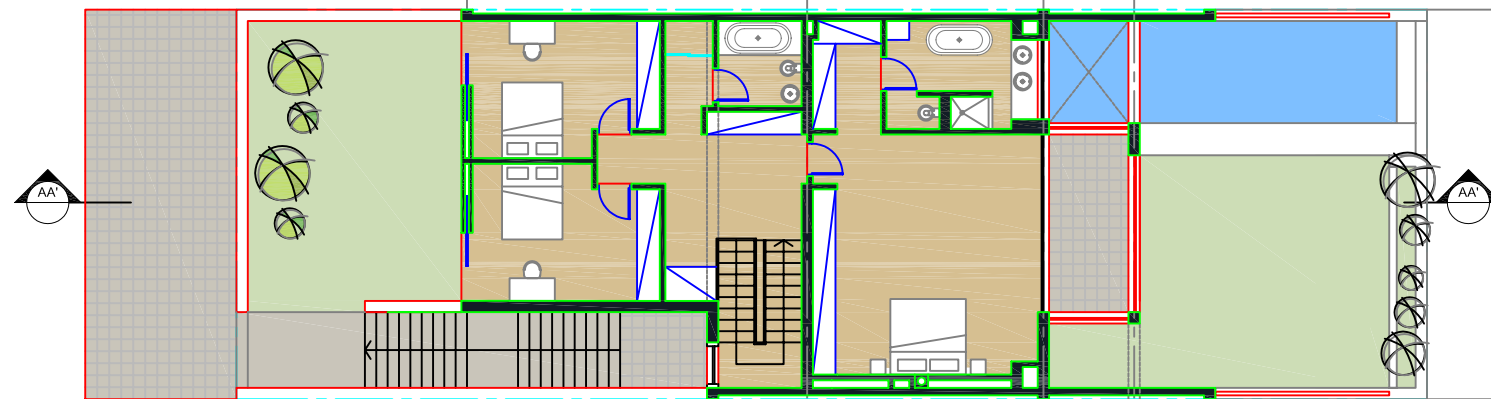


Urbanistički projekat

"Turističko naselje Skočiđevojka" / Budva

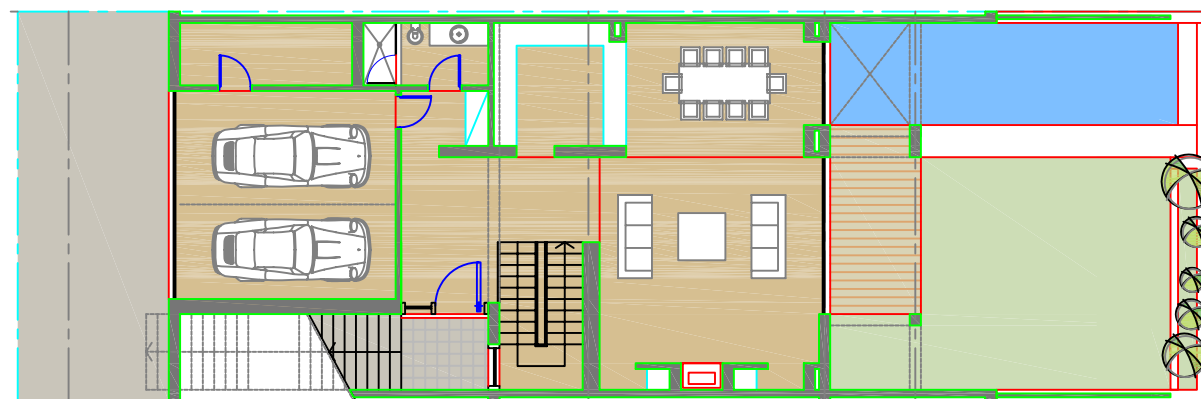


PRESJEK AA'



OSNOVA 1 SPRATA

PRIZEMLJE	= 160 m ²
1 SPRAT	= 145 m ²
UKUPNO	= 305 m ²



OSNOVA PRIZEMLJA

1a

IDEJNO RJESENJE
APARTMANA/ UP1

razmjera:
R 1:200

investitor: Opština BUDVA

oktobar 2009.

obrađivač:

MONTENEGRO

*Urbanističko planiranje, projektovanje, konsalting,
inženjering, export-import, d.o.o.*